



Beaufort County Public Works
Stormwater Infrastructure
Project Summary

Project Summary: Burton Wells Lake Washout Repair

Activity: Routine/Preventive Maintenance

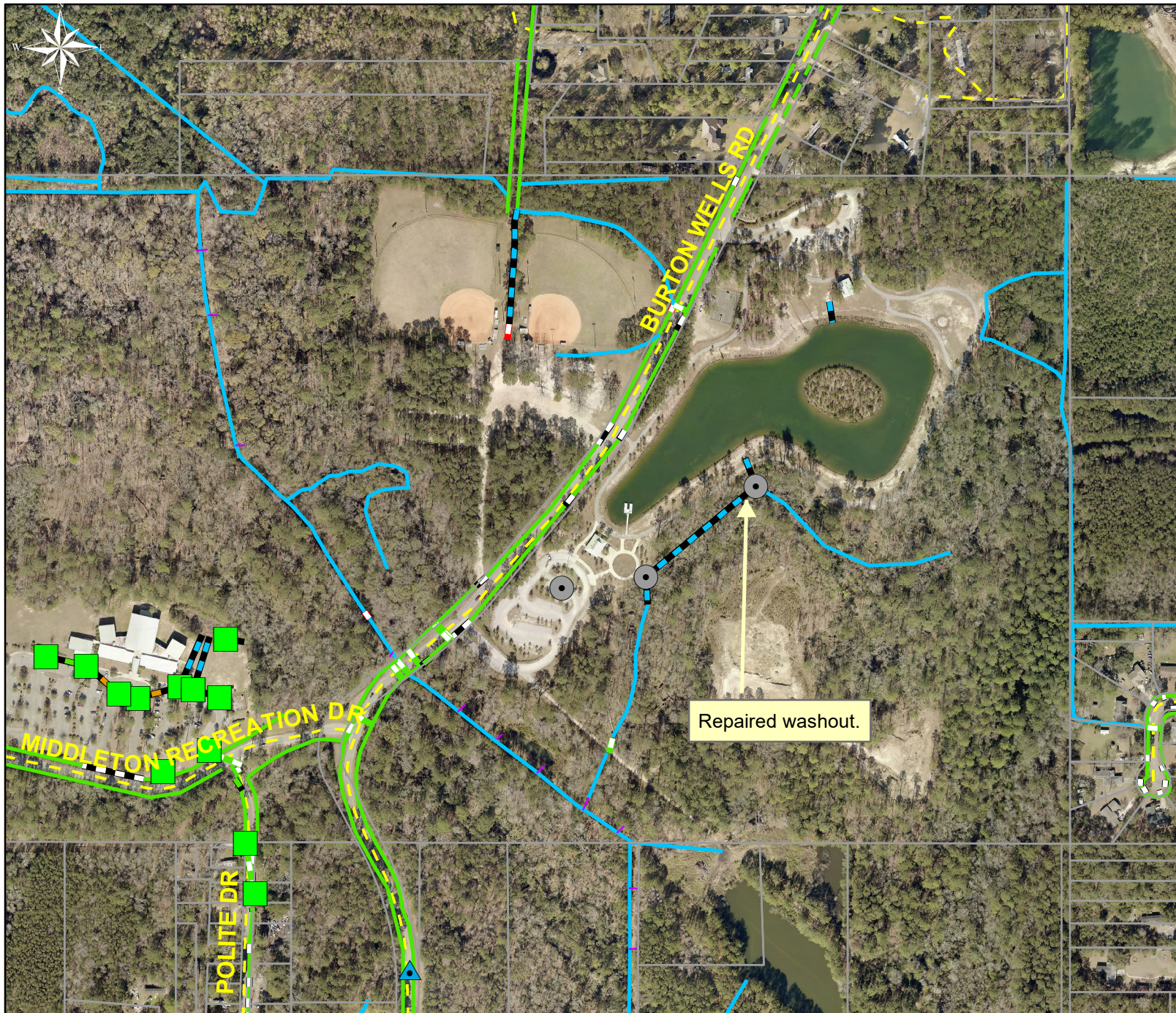
Duration: 07/30/18

Narrative Description of Project:

Repaired washout.

2019-509 / Burton Wells Lake Repair	Labor Hours	Labor Cost	Equipment Cost	Material Cost	Contractor Cost	Indirect Labor	Total Cost
AUDIT / Audit Project	1.0	\$21.79	\$0.00	\$0.00	\$0.00	\$0.00	\$21.79
HAUL / Hauling	4.0	\$83.10	\$56.64	\$47.85	\$0.00	\$28.84	\$216.43
ONJV / Onsite Job Visit	2.0	\$107.64	\$7.20	\$6.24	\$0.00	\$37.44	\$158.52
RPWO / Repaired Washout	2.0	\$39.72	\$24.77	\$4.58	\$0.00	\$24.42	\$93.49
2019-509 / Burton Wells Lake Repair Sub Total	9.0	\$252.25	\$88.61	\$58.67	\$0.00	\$90.70	\$490.23
Grand Total	9.0	\$252.25	\$88.61	\$58.67	\$0.00	\$90.70	\$490.23

(No Pictures Available)



Project: Burton Wells Lake Washout Repair

Activity: Routine/ Preventive Maintenance

Project #: 2019-509

Township/SW Dist: Port Royal Island/6

Completed: July 2018

Legend

Drainage Type

- Access Pipe
- Bleeder Pipe
- Channel Pipe
- Channel
- Stream
- Crossline Pipe
- Driveway Pipe
- Lateral
- Lateral Pipe
- River
- Road Pipe
- Roadside
- Roadside Pipe

0 100 200 400 600 800 Feet

1 inch = 420 feet

Prepared By: BC Stormwater Management Utility

Date Print: 04/25/19

File: C:\project summaries map\Burton Wells Lake Washout Repair _2019-509